

**Equipment Specifications
For Project Services Facilities
On Trailer Projects**

7.5.1
133.1
1.1.1
1.1.1

TABLE OF CONTENTS

<u>Subject</u>	<u>Page No.</u>
Introduction	1
General	1
Outdoor Equipment	1
Window Curtains	1
Paint Treatment	1
Privately-Owned Trailer Projects, Furniture and Equipment Specifications for:	
Community Buildings	2
Kitchens	3
Clinics	6
Child Service Facilities	7
Federally-Owned Trailer Projects, Furniture and Equipment Specifications for:	
Community Units and Service Trailers	8
Kitchens	9
Child Service Facilities	11
Health Facilities	12
Layout Plans for Community Buildings for Privately- Owned Trailers	
Buildings Nos. 301, 302, and 302A	Plate 1
Buildings Nos. 303 and 303A	Plate 2
Buildings Nos. 304, 304A, and 304A and B	Plate 3
Buildings Nos. 305, 305A, and 305A and B	Plate 4
Layout Plans for Community Units and Service Trailers for Federally-Owned Trailer Projects	
Unit A, and Groups B and C	Plate 5
Group D	Plate 6
Group C and E (Child Service Mobile Units)	Plate 7

9-1-45

Page 1

EQUIPMENT SPECIFICATIONS FOR PROJECT
SERVICES FACILITIES ON TRAILER PROJECTS

Introduction

This bulletin contains specifications for furniture and equipment to be used in tenant activity facilities on privately-owned and Federally-owned trailer projects under the management of the FPHA.

On privately-owned trailer projects, tenant activity facilities are housed in temporary buildings. The numerical designation for these tenant activity buildings is as follows: 301, 302, 303, 304, and 305. Play room wings which are built in conjunction with the tenant activity building have been designated as Wings "A" and "B".

On Federally-owned trailer projects, the designations for community units and service trailers to be used for tenant activities are: Unit A and Groups B, C, and D. The child service facilities on these trailer projects are designated as Groups C and E. (Group C may be utilized for either tenant activity or child services.)

General

The furniture and equipment provided in tenant activities space on trailer projects are fully specified in Bulletin No. 18, "Furniture and Equipment Specifications for Tenant Activities Buildings and Cafeterias for Dormitory Projects," Bulletin No. 6 "Equipment Specifications for Child Service Facilities for Family Dwelling Projects," and Bulletin No. 31, "Equipment Specifications for Tenant Activity Buildings for Family Dwelling Projects." It is intended that all the requirements and designations set forth in those specifications shall apply to and be followed in the manufacture and furnishing of the items herein set forth. Quantities required of specific items are listed in the tables at the end of this section.

Outdoor Equipment. Specifications for playfield apparatus, playground, athletic and other equipment items for outdoor tenant activities will be issued as a separate bulletin.

Window Curtains. On privately-owned trailer projects, curtains shall be made and installed for use at the one-unit windows in the community hall and club room. These shall be Hexter 27259 or equal.

Paint Treatment. For color treatment of painted walls, etc. in buildings located on the privately-owned trailer projects, refer to pages 20 and 21 of Bulletin No. 22, "Interior Furnishings for Project Services Facilities."

FURNITURE AND EQUIPMENT FOR COMMUNITY BUILDINGS
ON PRIVATELY-OWNED TRAILER PROJECTS

<u>Item</u>	<u>Designation</u>	<u>Quantities</u>				
		<u>301</u>	<u>302</u>	<u>Building Number</u>		<u>305</u>
				<u>303</u>	<u>304</u>	
Ash Trays - doz.		4	4	4	4	4
Bookcase	EA	1	2	2	2	3
Chair	XC	---	2	18	18	18
Chair, Arm	AH	2	4	4	8	8
Chair, Arm	AG	3	2	2	7	7
Chair, Folding	FC	20	72	90	100	110
Curtains, Window	---	4	5	8	10	11
Desk	DA	---	2	2	2	2
Love Seat	LH	1	2	2	4	4
Magazine Rack	BB	1	1	1	1	1
Ping Pong Table		1	1	1	1	2
Smoking Stands	SS	3	4	4	5	5
Table	TB	---	---	1	---	1
Table	TA	---	---	2	3	3

9-1-43

Page 3

SPECIFICATIONS FOR KITCHEN EQUIPMENT INCLUDING CHINA, GLASS, SILVER,
AND UTENSILS FOR PRIVATELY-OWNED TRAILER PROJECTS FOR COMMUNITY BUILDINGS

General

The following is a list of equipment which shall be furnished and installed in the community building kitchens for privately-owned trailer projects. The kitchens in each of these units vary slightly in size or shape but these differences are taken up in the length and position of cupboards. Any other variations are indicated below.

Equipment shall be delivered by this contractor in perfect condition and in appropriately protected and marked containers and shall be installed in a workmanlike manner. Sinks, cupboards, plumbing and electric outlets shall be provided by other contractors.

KITCHEN EQUIPMENT

		<u>Quantities</u>	
		<u>Unit No.</u>	
		#301	#304
		#302	#305
		#303	---
<u>Coal Range</u>	Duparquet #K3233 or equal 40"x29"x30" with oven size 12"x21"x13". Lined firebox with revolving shaker and jumping grate and detachable shaker. Doors of drop platform type and slide draft controls. Furnish steel or black iron flue and 8" smoke leader and damper. Furnish and erect 20 gauge steel and enameled. Secure to brick work 5'0"x3'0".	1 ea.	1 ea.
<u>Gas Range</u> (Alternate)	Similar in size and equipment to the above including quart burner with half moon plate and solid reducing ring insulated front and sides and counterbalanced door.	1 ea.	1 ea.
<u>Refrigerators</u>	General electric Model B8-41 or equal refrigerator size 33"x23 1/2" x 61 3/8" high. To have net cabinet volume of 8.2 cu. ft. Complete with all accessories.	1 ea.	---
	General Electric Model 15 or equal refrigerator with compressor. Size of refrigerator 32"x25 3/4"x73" high. To have net Capacity of 16.21 cu. ft.	---	1 ea.

KITCHEN FURNISHINGS AND UTENSILS

The following articles shall be furnished in appropriately marked containers, or packages.

	<u>Quantities</u>	
	<u>Unit No.</u>	
	#301	#304
	#302	#305
	#303	_____
<u>Linens, etc.</u>		
Dust cloths	1/2 doz.	1/2 doz.
Napkins, Paper-13 ¹ / ₂ " x 19 ¹ / ₂ " (1000 in pkg.)	10 pkgs.	10 pkgs.
Pot Holders	1/2 doz.	1/2 doz.
Towels, Dish	2 doz.	4 doz.
Towels, Hand	2 doz.	2 doz.
<u>Utensils</u>		
Beater, Double egg - 12-1/4"	1	1
Boiler, Cereal - 7 quart	1	1
Boiler, Double - 1-1/2 quart	1	1
Bowl, Seating - 1-1/2 quart	1	1
Bowl, Wood Chopping - 17"	1	1
Box, Knife	1	2
Bread Board	1	1
Bread Box	1	1
Brushes, Bottle	1	2
Brushes, Grease	1	1
Brushes, Pastry	2	2
Brushes, Vegetable	1	1
Can Opener, Edlund, or equal - 14"	1	1
Cans, Waste Black Iron - 17" x 24"	1	1
Colanders, Retinned	1	2
Cups, Tin, measuring - 1/2 pint	1	2
Cutters, Assorted	2	3
Drainers, Wire Dish - 18"x24"x8"	1	1
Forks, - 12-1/2"	1	1
Grate, Nutmeg	1	1
Griddle, C. L. - 25"	1	2
Knife, Single Chopping	1	1
Knives, Bread - 10" blade	1	1
Knives, Cook's - 12" blade	1	1
Knives, Pallet - 10" blade	1	2
Knives, Paring - 3-1/2"	4	4
Ladles - 2 oz.	1	2
Ladles - 4 oz.	1	1

9-1-43

Page 5

<u>Utensils (Cont'd.)</u>	<u>Quantities</u>	
	<u>Unit No.</u>	
	#301	#304
	#302	#305
	#303	_____
Ledles - 8 oz.	1	1
Meshes, Potato - 15-1/2", "V" type	1	1
Measure - 1 quart, tin	1	1
Pans, Baking - 12"x18"x2-1/4"	2	2
Pans, Dish - 21 quart	1	1
Pans, Fry - 12-1/2"	2	3
Pans, Roast - black iron 16"x22"	1	2
Pans, Sauce - 1-1/2 quart	1	1
Pans, Sauce - 4-1/2 quart	1	1
Pans, Sauce - 8 quart	1	1
Picks, Ice	1	1
Pitcher, White Enamel - 1/2 quart, no covers	2	3
Pots, Cooking - 4-1/2 quart	1	1
Rolling Pins	1	1
Skimmer	1	1
Spatula 10"	1	1
Spoons, Basting 11-3/8"	1	1
Spocns, Wooden 14"	1	1
Squeezer, Orange, hand-operated	1	1
Strainer, Wire	1	1
Tongs, Ice	1	1
Trays, White Enamel - 12-1/8" x 24-1/2" x 7/8"	2	3
Turners, Cake	1	2

Dishes and Flatware

Bowls, Cereal, oatmeal, 6-1/8" act., R/E	48	72
Bowls, Mixing - 6 to a set	1 set	1 set
Cups, tea, handled, 8 oz.	48	72
Dishes, Dessert - 4-3/4"	48	72
Forks, chrome plate on steel	48	72
Glasses, Drinking - 8 oz.	48	72
Knives, chrome plate on steel	36	72
Pitchers, Cream - 8 oz.	12	24
Pitchers, Glass - 40 oz.	7	4
Plates, Breakfast - 8-1/8"	48	72
Saucers, tea, R/E	48	72
Spoons, Serving - chrome plate on steel	6	8
Spocns, Tea, chrome plate on steel	48	72

9-1-43

EQUIPMENT FOR CLINICS ON PRIVATELY-OWNED TRAILER PROJECTS

Item No.	Item	Quantities				
		Building Number				
		301	302	303	304	305
1	Wood Examination Table 3 piece, w. 2-pc. Cushion	1	1	1	1	1
2	Counter and Baby Dressing Bin <u>1</u> /	---	---	1	1	1
3	Counter and Wall Cabinet <u>1</u> /	1	1	1	1	1
4	Soap Dispenser	1	1	1	1	1
5	Instrument Sterilizer	1	1	1	1	1
6	Instrument Table on rollers	1	1	2	2	2
7	Wood Foot Stool	1	1	1	1	1
8	Waste Paper Receptacle	1	1	1	1	1
9	Wood Stool, 18" high, St	1	1	1	1	1
10	Gooseneck Examination Lamp	1	1	1	1	1
11	Adult Scale (Physician's)	1	1	1	1	1
12	Infant's Scale	1	1	1	1	1
13	Hook Strip <u>1</u> /	1	1	1	1	1
14	Mirror	1	1	1	1	1
16	Sanitary Waste Receptacle	1	1	1	1	1
18	Desk, DB	---	---	---	1	1
19	Wood Chair XC	---	---	---	1	1
30	Utility Table	1	1	1	1	1

1/ These items to be furnished by general contractor and not by Central Procurement Division. See Circular dated July 31, 1943, "To: Holders of Bulletin No. 31".

9-1-43

FURNITURE AND EQUIPMENT FOR CHILD SERVICE FACILITIES
ON PRIVATELY-OWNED TRAILER PROJECTS

Item No.			Quantities	
			Play Room Wing "A"	Play Room Wings "A" & "B"
1	Tables, Rectangular	- 23"x36"	4	8
	Tables, Round	- 3' 0" dia.	1	2
	Tables, Server	- 23"x60"	1	1
2	Chairs	- 10" high	12	22
	Chairs	- 12" high	20	41
	Chairs	- 14" high	4	6
3	Adult Chairs XC		2	4
4	Foot Stools		5	9
5	Desks		1	2
6	Filing Cabinets		1	1
7	Cots		33	60
8	Pads		33	60
9	Covers		33	60
10	Cot Dollies		2	4
11	Castle Gym		1	2
12	Saw Horses		6	10
13	Climbing Apparatus		1	2
14	Steps & Platform		1	1
15	Boards	8'	2	4
	Boards	10'	2	4
17	Detachable Slide		1	1
18	Parallel Bars		1	2
19	Wagons		2	4
20	Sand Boxes		1	1
22	Screens		6	12
23	Steps for Toilet		1	2
24	Cases		2	2
25	Ladder Box		1	2
27	Tea Table - & 4 Chairs		1	2
29	Easels		2	4
30 B	Phonograph		1	1
30 C	Records - Set		1	1
31 A	Sheets - Doz.		6	11
31 B	Duck Sheets - Doz.		6	11
31 C	Blankets - Doz.		3	6 1/2
31 D	Towels - Doz.		4	7
31 G	Oil Cloth		2	4
32 B	Paper Towel Cabinet		1	1
32 E	Hampers		1	2
32 F	Scales		1	1
33 A	Locomotive Toys - Set			1
33 B	Hammer Beds - Set			1
33 C	Wooden Animals - Set		1	2
35 E	Hollow Blocks - doz.		2	4
33 F	Building Blocks - Set			1

9-1-43

Page 8

TENANT ACTIVITY FURNITURE AND EQUIPMENT FOR COMMUNITY UNITS AND
SERVICE TRAILERS FOR FEDERALLY-OWNED TRAILERS

<u>Item</u>	<u>Designation</u>	<u>Quantities</u>			
		<u>Unit A</u>	<u>Group B</u>	<u>Group C</u>	<u>Group D</u>
Ash Trays -- doz.	--	4	4	4	4
Bookcase	BA	1	2	2	2
Chair	XC	1	3	6	22
Chair, Arm	AH	2	2	2	4
Chair, Arm	AG	2	16	20	24
Chair, Folding	FC	25	35	40	70
Desk	DA	1	3	2	2
Magazine Rack	BB	1	1	1	1
Screens-6' long <u>1/</u>	--	--	--	6	9
Love Seat	LH	2	4	3	5
Smoking Stands	--	2	3	6	8
Table	TA	--	2	2	4
Table, Card	TE	2	3	3	6
Table, Coffee	TF	2	4	3	5
Table, Ping Pong	--	1	1	1	2

1/ Suggested for local purchase. Quantity may vary depending on the need.

KITCHEN FURNISHINGS AND UTENSILS IN SERVICE TRAILERS FOR FEDERALLY-
 OWNED TRAILER PROJECTS

	<u>Quantities</u>
	<u>GROUP</u>
	<u>B, C & D</u>
<u>Linens, etc.</u>	
Dust cloths	1/2 doz.
Napkins, Paper-13 $\frac{1}{2}$ " x 13 $\frac{1}{2}$ " (1000 in pkg)	10 pkgs.
Pot Holders	1/2 doz.
Towels, Dish	2 doz.
Towels, Hand	2 doz.
 <u>Utensils</u>	
Beater, Double egg - 12-1/4"	1
Boiler, Cereal - 7 quart	1
Boiler, Double - 1-1/2 quart	1
Bowl, Beating - 1-1/2 quart	1
Bowl, Wood Chopping - 17"	1
Box, Knife	1
Bread Board	1
Bread Box	1
Brushes, Bottle	1
Brushes, Grease	1
Brushes, Pastry	2
Brushes, Vegetable	1
Can Opener, Edlund or equal - 14"	1
Cans, Black Iron Waste - 17" x 24"	1
Colanders, Retinned	1
Cups, Tin Measuring - 1/2 pint	1
Cutters, Assorted	2
Drainers, Wire Dish - 18"x24"x8"	1
Forks, - 12-1/2"	1
Grate, Nutmeg	1
Griddle, C. L. - 25"	1
Knife, Single Chopping	1
Knives, Bread - 10" blade	1
Knives, Cooks - 12" blade	1
Knives, Palette - 10" blade	1
Knives, Paring - 3-1/2"	4
Ladles - 2 oz.	1
Ladles - 4 oz.	1

9-1-43

Page 10

Quantities
GROUPS
B, C, & D

Utensils (Cont'd.)

Ladles - 8 oz.	1
Masher, Potato - 15-1/2", "V" type	1
Measure - 1 quart, tin	1
Pans, Baking - 12"x18"x2-1/4"	2
Pans, Dish - 21 quart	1
Pans, Fry - 12-1/2"	2
Pans, Roast - Black iron 16"x22"	1
Pans, Sauce - 1-1/2 quart	1
Pans, Sauce - 4-1/2 quart	1
Pans, Sauce - 8 quart	1
Picks, Ice	1
Pitcher, White Enamel - 4 quart, no covers	2
Pots, Cooking - 4-1/2 quart	1
Rolling Pins	1
Skinmer	1
Spatula 10"	1
Spoon Basting 11-3/8"	1
Spocn, Wooden 14"	1
Squeezer, Orange, hand-operated	1
Strainer, Wire	1
Tongs, Ice	1
Trays, White Enamel - 12-1/8"x24-1/2"x7/8"	2
Turners, Cake	1

Dishes and Flatware

Bowls, Cereal, Oatmeal, 6-1/8" act., R/E	48
Bowls, Mixing - 6 to a set	1 set
Cups, Tea, handled, 8 oz.	48
Dishes, Dessert - 4-3/4"	48
Forks, chrome plate on steel	48
Glasses, Drinking - 8 oz.	48
Knives - chrome plate on steel	48
Pitchers, cream - 8 oz.	36
Pitchers, Glass - 40 oz.	12
Plates, Breakfast - 8-1/8"	7
Saucers, Tea	48
Spoons, Serving - chrome plate on steel	6
Spoons, Tea, chrome plate on steel	48

CHILD SERVICE FURNITURE AND EQUIPMENT FOR COMMUNITY UNITS AND
SERVICE TRAILERS FOR FEDERALLY-OWNED TRAILER PROJECTS

Item No.	Item	Quantities	
		Group C	Group E
1	Tables, Rectangular 23" x 36"	6	12
	Tables, Round 3'0" dia.	1	2
	Tables, Server 23" x 60"	1	1
2	Chairs	46	92
3	Adult Chairs, AG	2	4
4	Foot Stools	5	10
5	Desk, DB	1	2
6	Filing Cabinets	1	1
7	Cots	43	83
8	Pads	43	83
9	Covers	43	83
10	Cot Dollies	2	4
11	Castle Gym	1	2
12	Saw Horses	6	12
13	Climbing Apparatus	1	2
14	Steps and Platform	1	1
15	Boards	4	8
17	Detachable Slide	1	1
18	Parallel Bars	1	2
19	Wagons	2	4
20	Sand Boxes	1	1
22	Screens	6	12
23	Steps	3	6
24	Cases	2	2
25	Ladder Box	1	2
27	Tea Table and 4 Chairs	1	2
29	Easels	2	4
30B	Phonograph	1	1
30C	Records - Set	1	1
31A	Sheets - Doz.	8	16
31B	Duck Sheets - Doz.	8	16
31C	Blankets - Doz.	4	8
31D	Towels - Doz.	9	18
31G	Oil Cloth - roll	6	6
32B	Paper Towel Cabinet	2	3
32E	Hampers	3	5
32F	Scales	1	1
33A	Locomotive Toys - set	1	2
33B	Hammer Bed - set	2	4
33C	Wooden Animals - set	3	3
33E	Hollow Blocks - Doz.	6	12
33F	Building Blocks - set	1	1

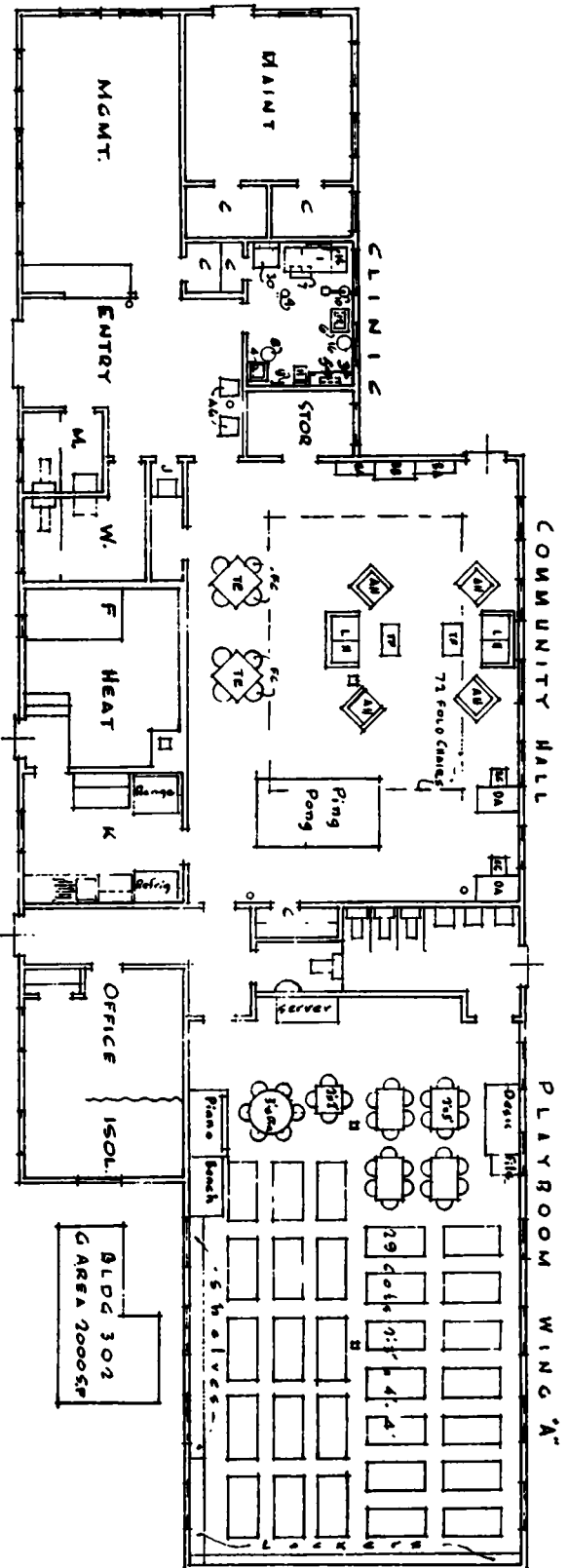
9-1-43

Page 12

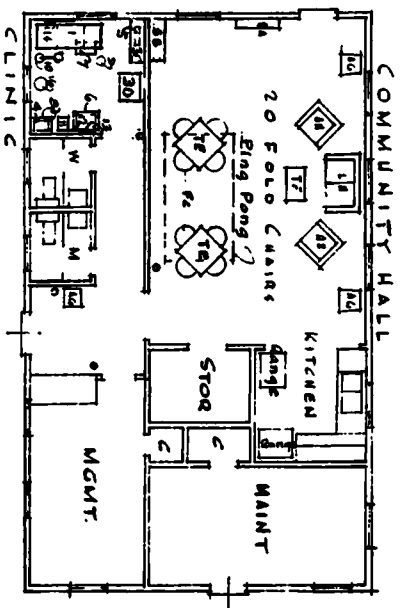
FURNITURE AND EQUIPMENT FOR HEALTH FACILITIES FOR
FEDERALLY-OWNED TRAILER PROJECTS

Clinic Trailers. The quantities of furniture and equipment for clinic trailers are specified in Bulletin No. 16, "Equipment Specifications for Clinic-Trailers for Trailer Projects", dated April 1, 1943; revised June 15, 1943.

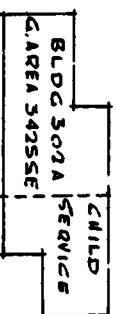
Maternity Convalescence Trailers. The quantities of furniture and equipment for maternity convalescence trailers are specified in Bulletin No. 39, "Equipment Specifications for Maternity Convalescence Trailer Units", dated August 1, 1943.



BUILDINGS NOS 302 & 302-A
RANGE 101 TO 200 UNITS



BUILDING NO. 301
RANGE UP TO 100 UNITS

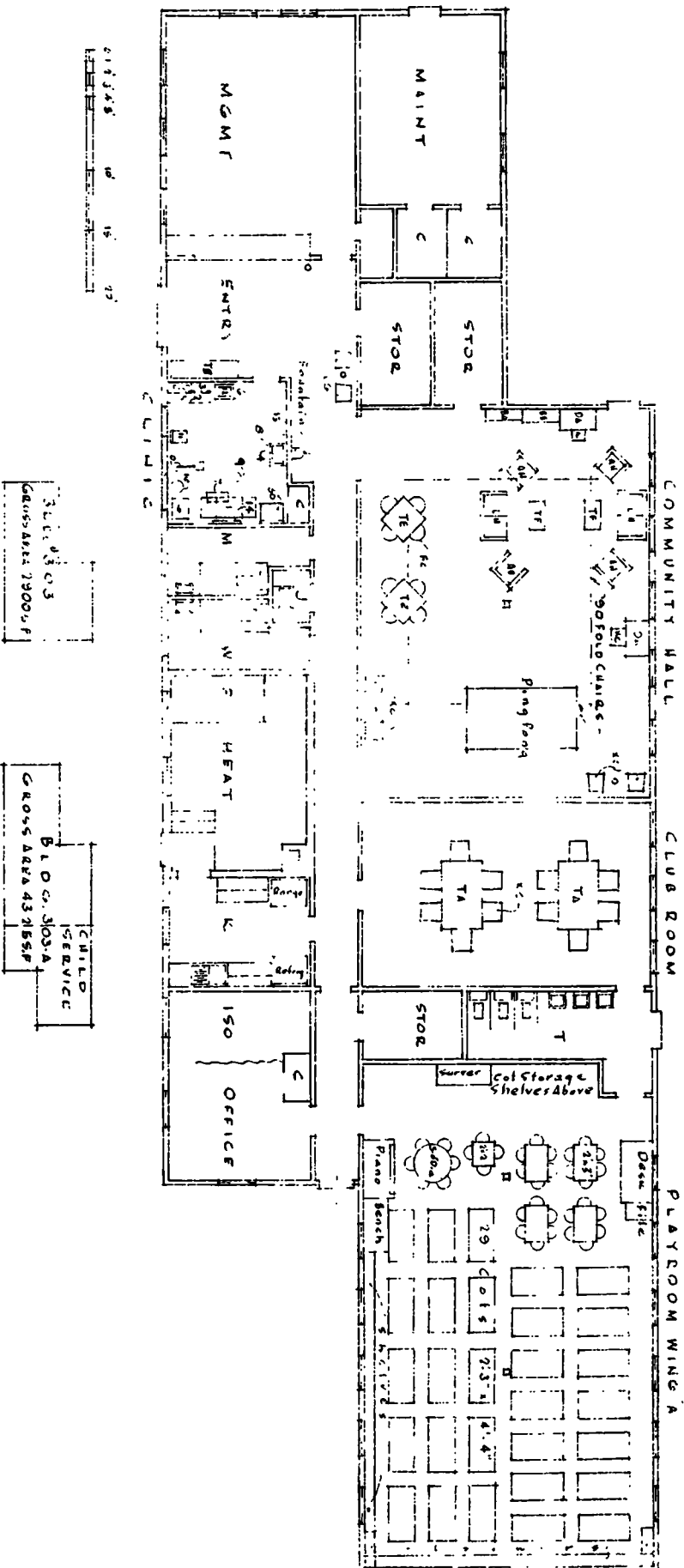


COMMUNITY BUILDINGS FOR PRIVATELY OWNED TRAILERS

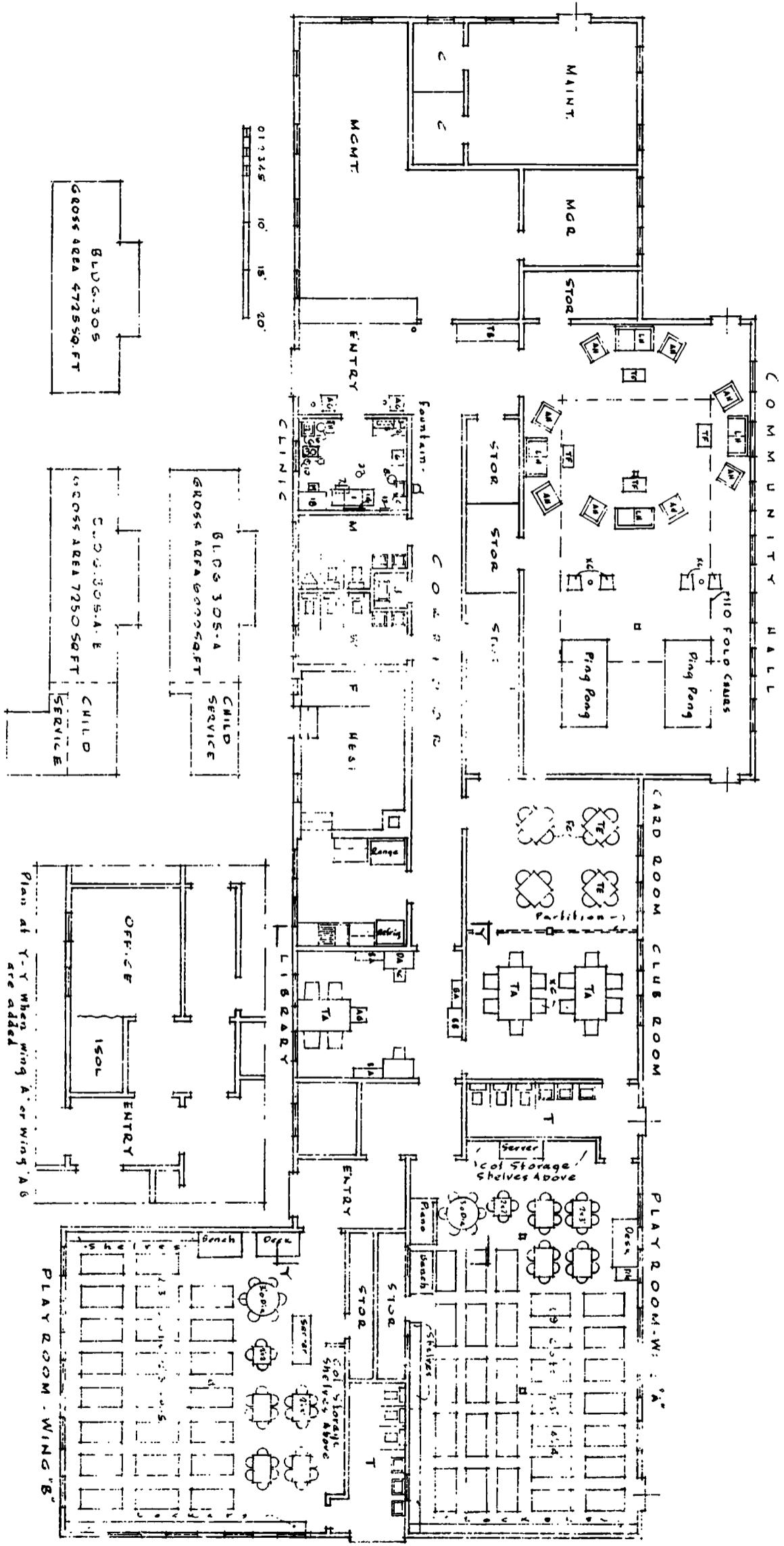
PLATE 1

FEDERAL PUBLIC HOUSING AUTHORITY
MANAGEMENT STANDARDS DIVISION
FURNITURE & EQUIPMENT LAYOUT
AUG. 1, 1943

COMMUNITY BUILDINGS FOR PRIVATELY OWNED RAILERS
BUILDINGS NOS. 303 & 303-A
RANGE 201 TO 300 UNITS



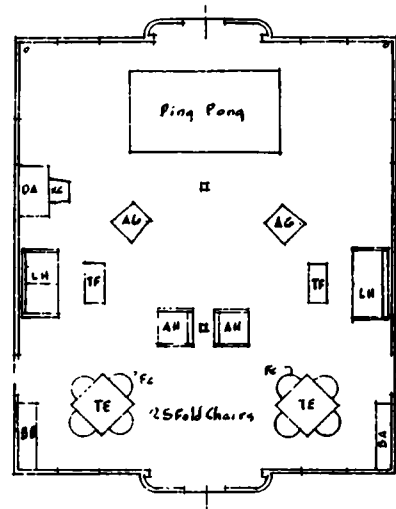
FEDERAL PUBLIC HOUSING ADMINISTRATION
MANAGEMENT STANDARDS DIVISION
FURNITURE & EQUIPMENT LAYOUT
AUG 1, 1943



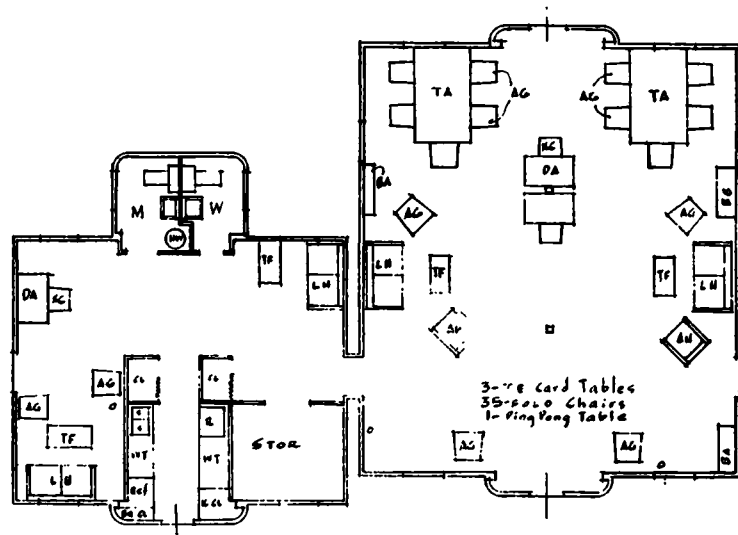
COMMUNITY BUILDING FOR PRIVATELY OWNED TRAILERS
 BUILDINGS NOS. 305-305-A 305-A B
 RANGE 401 TO 530 UNITS

FEDERAL PUBLIC HOUSING AUTHORITY
 MANAGEMENT STANDARDS DIVISION
 FURNITURE & EQUIPMENT LAYOUT
 AUG. 1, 1943

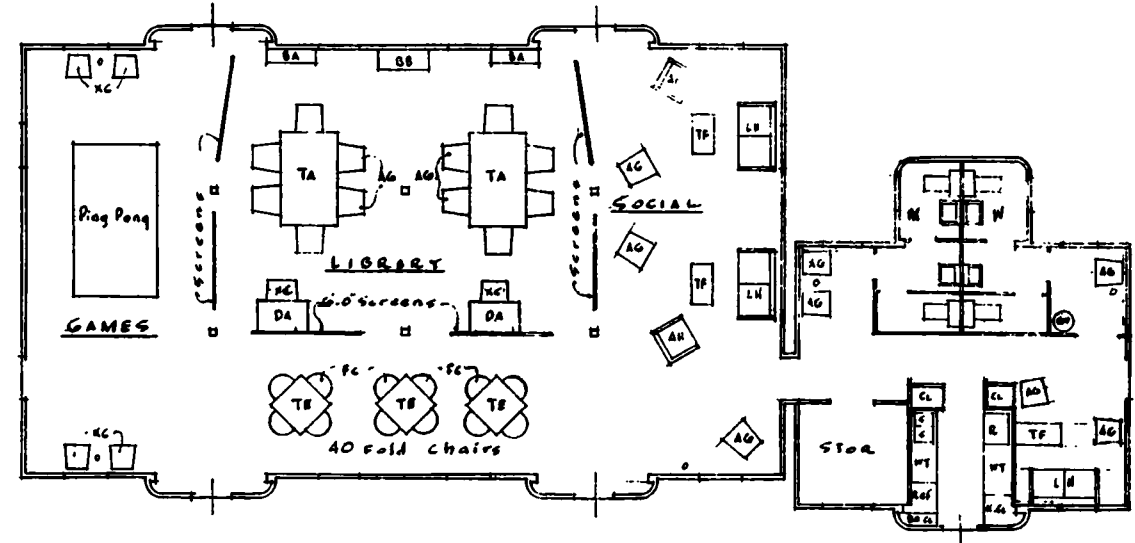
PLATE 4



UNIT A



GROUP B



GROUP C

Drawings at 1/8" = 1'-0"

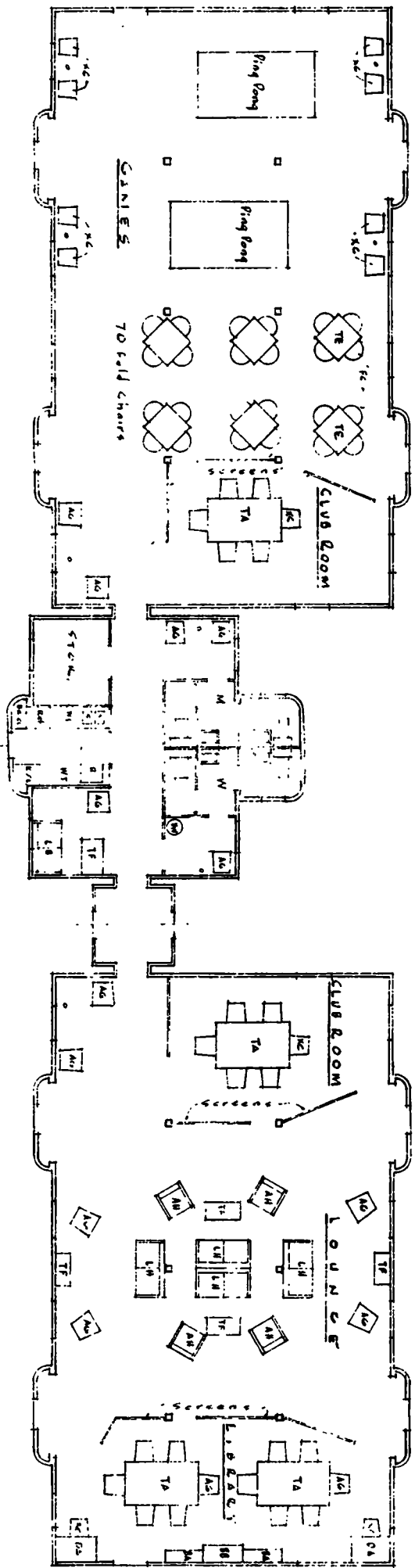
PROJECTS THAT PROGRAM UNIT-A, GROUPS B, C, & D

Project Size No. of Units	Community Units & Service Trailers
50 - 100	1. Unit-A
101 - 200	1. Group-B
201 - 300	1. Each of Groups B & C
301 - 400	2. Group-C
401 - 550	1-Each of Groups C & D
701 - 900	1-Group C & 2- Groups D
901 - 1200	1-Unit-A, 2 Each of Groups C & D

TENANT ACTIVITY EQUIPMENT LAYOUTS. UNIT A. GROUPS B, & C.
EXPANSIBLE COMMUNITY UNITS & SERVICE TRAILERS

PLATE 5

FEDERAL PUBLIC HOUSING AUTHORITY
MANAGEMENT STANDARDS DIVISION.
EXPANSIBLE COMMUNITY UNITS & SERVICE
TRAILERS AUG. 1, 1943



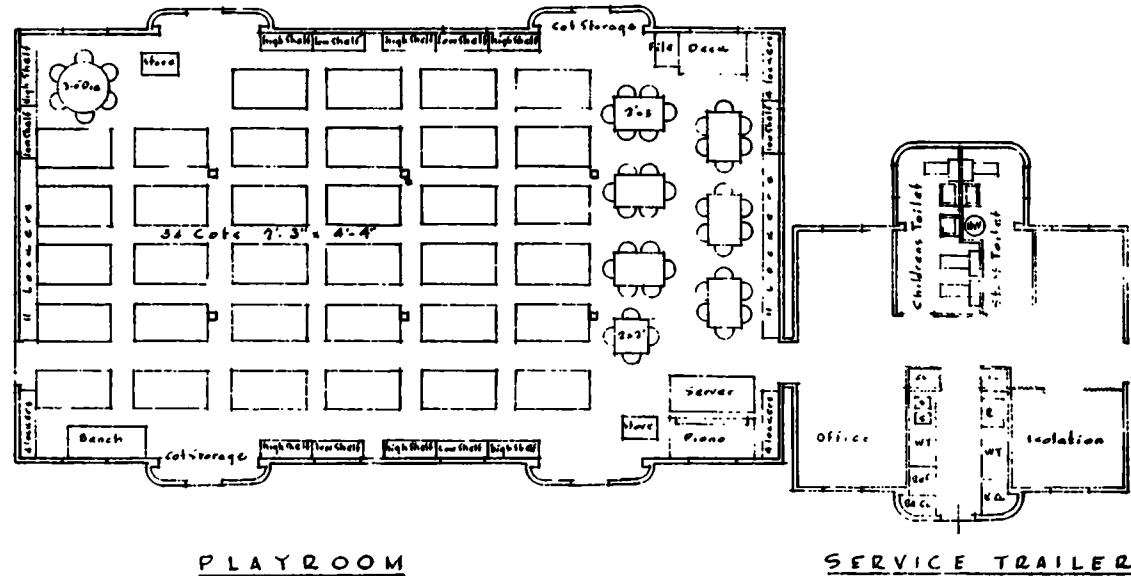
PROJECTS THAT PROGRAM GROUP D

Project Title	Community Units & Service Trailers
431-550	1 each of Group C & D
551-700	2 Groups D
701-800	1 Group C & 1 Group D
801-900	1 Unit A, 2 each of Groups C & D

TENANT ACTIVITY EQUIPMENT LAYOUT
EXPANDIBLE COMMUNITY UNITS & SERVICE TRAILERS
 GROUP D
 8" SCALE

PLATE 6

FEDERAL PUBLIC HOUSING AUTHORITY
 MANAGEMENT STANDARDS DIVISION
 EQUIPMENT LAYOUT GROUP-D
 AUG. 1943

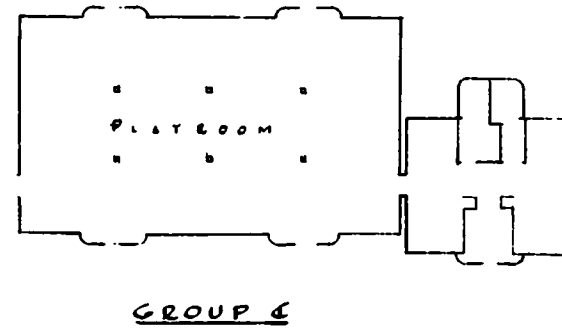


PLAYROOM

1/8" SCALE

SERVICE TRAILER

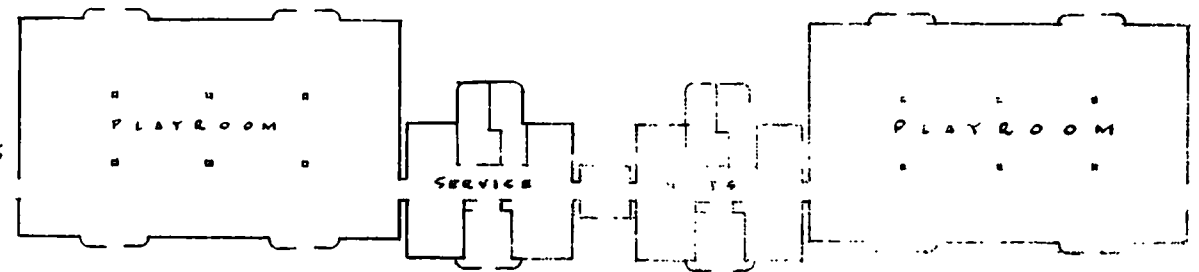
EQUIPMENT LAYOUT FOR CHILD SERVICE COMMUNITY UNITS
& SERVICE TRAILERS, MOBILE UNITS GROUPS C & E



GROUP C

CHILD SERVICE CENTERS

Project Size No. of Units	Child Service Centers	Accommodations No. of Children
100 - 300	1 GROUP C	10 - 25
301 - 500	1 GROUP E	41 - 86
501 - 800	1 GROUP C & 1 GROUP E	66 - 126
801 - 1000	1 GROUP E	121 - 155
1001 - 1200	2 GROUP E & 1 GROUP C	137 - 206



GROUP E

DIAGRAMS AT 1/16" SCALE

PLATE 7

FEDERAL PUBLIC HOUSING ADMINISTRATION
 MANAGEMENT STANDARDS DIVISION
 15 PENNSYLVANIA AVENUE, WASHINGTON, D.C.
 AUG. 1943