

The Saint Paul Foundation

Central Corridor Funders Collaborative and Corridors of Opportunity

Launched: 2008

Public Partners: The Corridors of Opportunity work is led by a "Policy Board" comprised of 26 members from multiple sectors and jurisdictions.

Since 1940, thousands of generous individuals committed to the Saint Paul area have made charitable gifts to The Saint Paul Foundation. Today, the Foundation is the state's largest community foundation. Guided by the legacy of its earliest donors, the Foundation helps donors achieve their charitable giving goals and have long-lasting impact in the community. The Foundation is an affiliate of Minnesota Philanthropy Partners. Learn more at saintpaulfoundation.org and mnpartners.org.

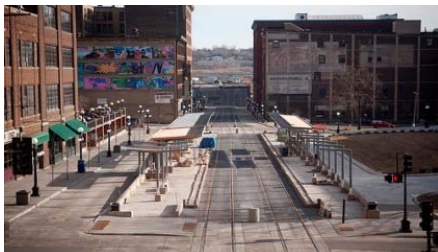
The Saint Paul Foundation supports large-scale, cross-sector initiatives including the 13-member Central Corridor Funders Collaborative begun in 2008 and the regional Corridors of Opportunity initiative launched in 2011.



Both initiatives are focused on working with others — local resident organizations, community groups, nonprofit and business coalitions, and public agencies — to create and implement strategies aimed at ensuring that the adjoining neighborhoods, residents and businesses broadly share in the benefits of public and private investment along the region's transitways.



These investments and partnerships are bearing fruit. Grant and loan funds are preserving housing affordability and seeding new development (more than 1,000 housing units and 150,000 square feet of commercial space) along three of the region's transit corridors. In 2012 during the Central Corridor's heavy construction season, 353 small, mostly minority-owned businesses received deep technical assistance, including business planning, marketing, and financial review. Of that cohort, all but four remained in business.



The Saint Paul Foundation

The foundation's mission is to mobilize resources and be a catalyst to enrich lives and communities.

www.saintpaulfoundation.org