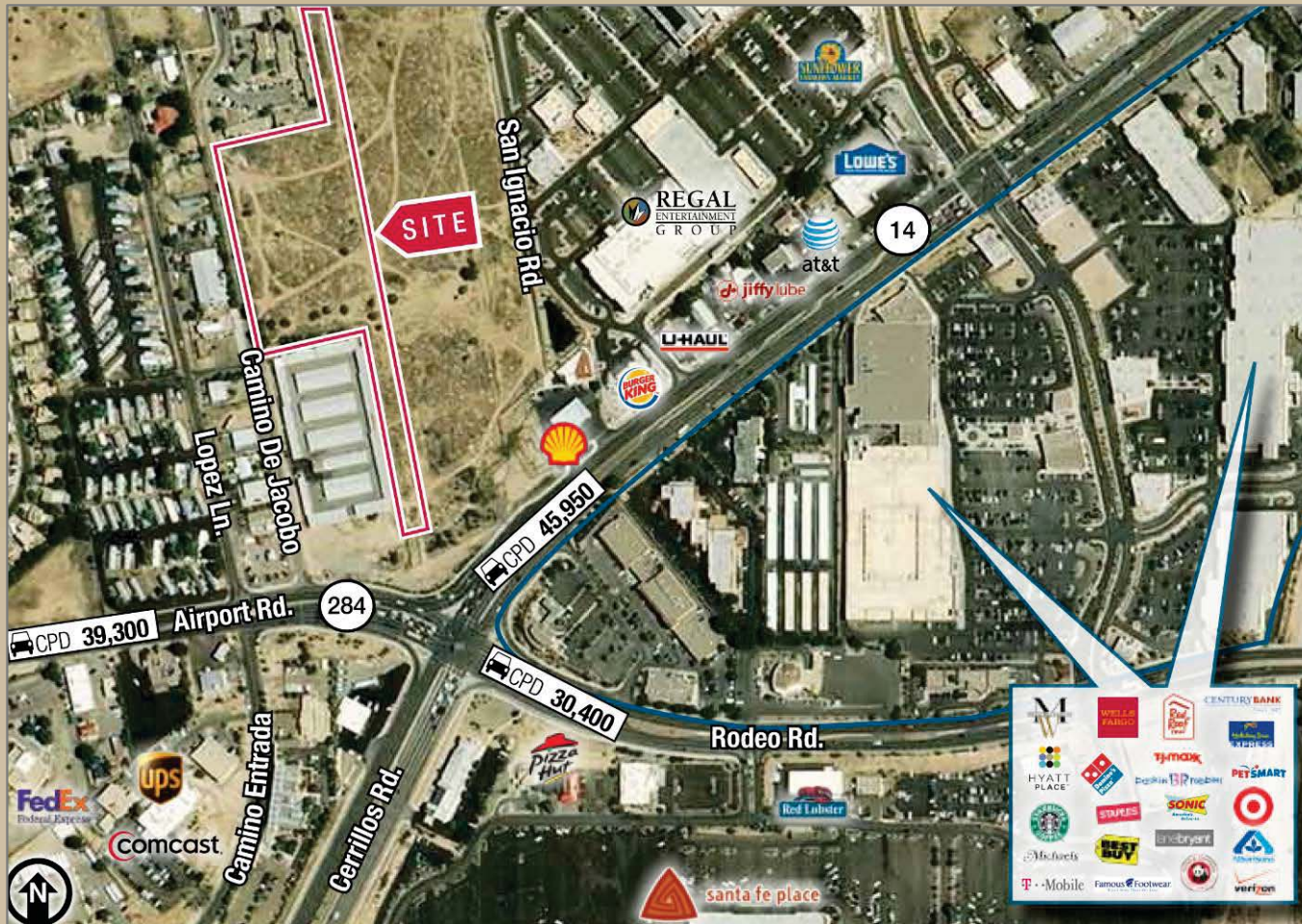


**REDUCED \$290,000**  
**COMMERCIAL ACREAGE**  
**AT AIRPORT & CERRILLOS**



**Camino de Jacobo**  
 Santa Fe, NM 87507

SALE PRICE  
 \$1,290,000  
**\$1,000,000**  
 (±\$3.48/SF)

LAND/LOT AREA  
 ±6.6 Acres  
 ±287,496 SF

ZONING  
 C-2

**BENEFITS**

- Strategically located commercial site in Santa Fe's fastest growing area
- Surrounded by new and established neighborhoods and commercial developments
- Ready for retail development
- Potential for multi-family development with city approval

**Best Buy in Santa Fe!**

**COMMERCIAL**  
**PROPERTIES, INC**  
 (505) 216-1500

2019 GALISTEO ST. SUITE L-1 SANTA FE, NM 87505

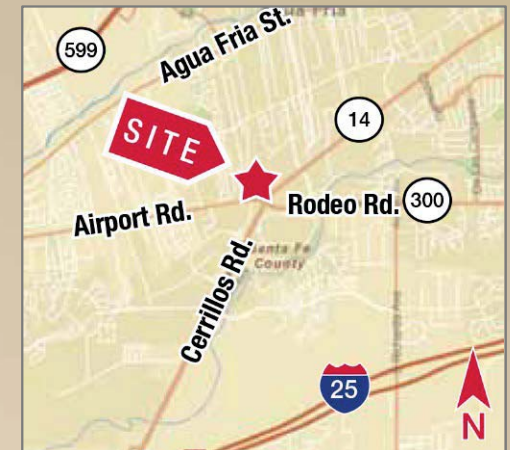
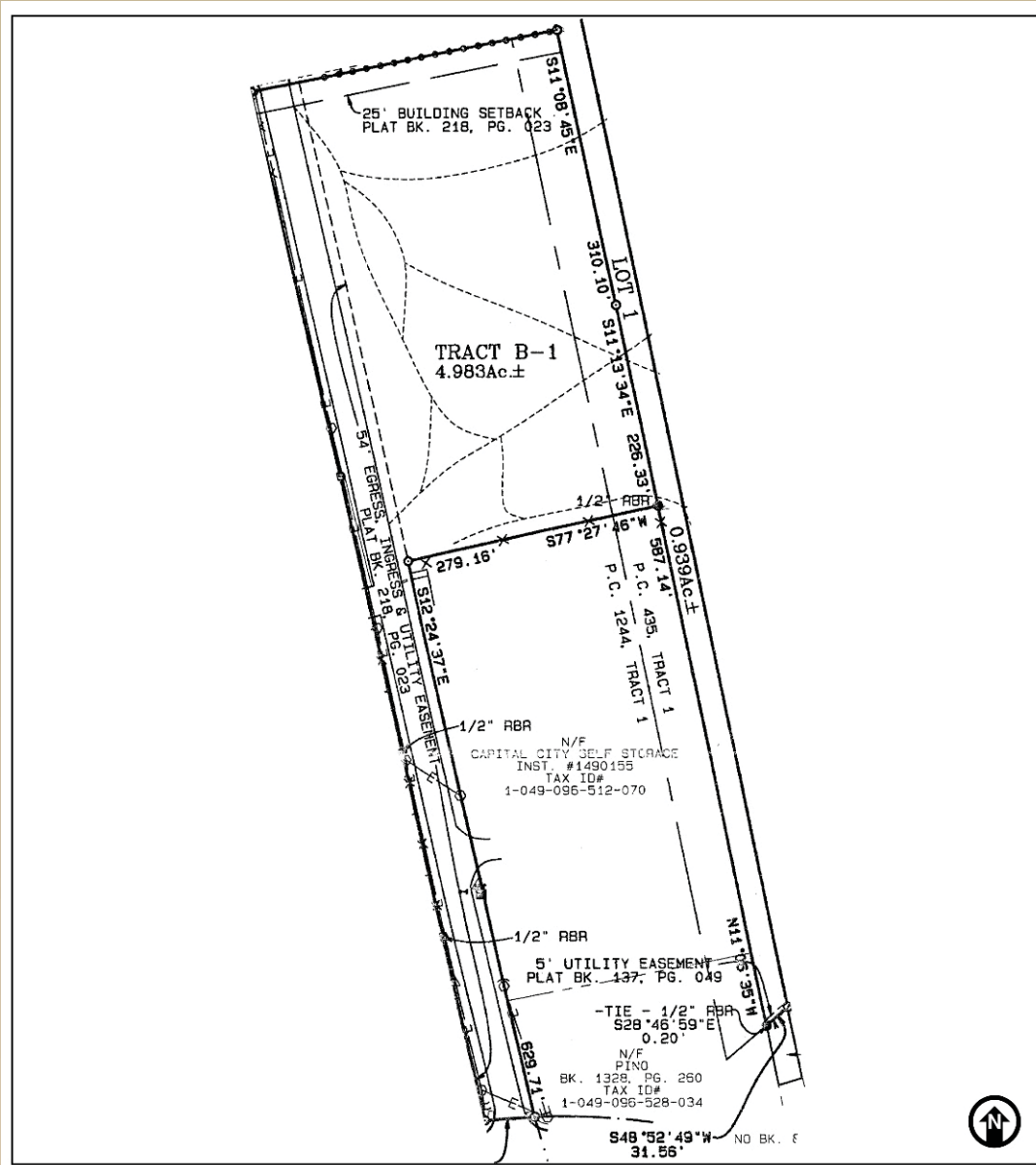
INFORMATION ENCLOSED IS DEEMED TO BE FROM RELIABLE SOURCES, HOWEVER, IT IS SUBJECT TO CHANGE, WITHDRAWAL FROM THE MARKET AND INDEPENDENT VERIFICATION BY PROSPECTIVE BUYER OR LESSEE, AS A PART OF THEIR DUE DILIGENCE IN DETERMINING THE FEASIBILITY AND ACCURACY OF INFORMATION OF THE PROPERTY FOR THEIR USE.

[www.CPI-NM.com](http://www.CPI-NM.com)

**JAMES WHEELER, CCIM**  
 (505) 470-8081 (CELL)  
 LICENSE # 18725



## Survey & Map



**COMMERCIAL  
PROPERTIES, INC**  
(505) 216-1500

**2019 GALISTEO ST. SUITE L-1 SANTA FE, NM 87505**

INFORMATION ENCLOSED IS DEEMED TO BE FROM RELIABLE SOURCES, HOWEVER, IT IS SUBJECT TO CHANGE, WITHDRAWAL FROM THE MARKET AND INDEPENDENT VERIFICATION BY PROSPECTIVE BUYER OR LESSEE, AS A PART OF THEIR DUE DILIGENCE IN DETERMINING THE FEASIBILITY AND ACCURACY OF INFORMATION OF THE PROPERTY FOR THEIR USE.

**WWW.CPI-NM.COM**

**JAMES WHEELER, CCIM**  
(505) 470-8081 (CELL)  
LICENSE # 18725

## Demographics 1 of 2

	1 mile	3 miles	5 miles
<b>Population</b>			
1990 Population	6,461	29,500	53,305
2000 Population	9,152	42,510	68,136
2010 Population	10,223	50,525	79,547
2015 Population	10,651	53,790	83,989
1990-2000 Annual Rate	3.54%	3.72%	2.49%
2000-2010 Annual Rate	1.09%	1.70%	1.52%
2010-2015 Annual Rate	0.82%	1.26%	1.09%
2010 Male Population	50.7%	49.3%	48.9%
2010 Female Population	49.3%	50.7%	51.1%
2010 Median Age	29.8	33.5	36.8
In the identified area, the current year population is 79,547. In 2000, the Census count in the area was 68,136. The rate of change since 2000 was 1.52 percent annually. The five-year projection for the population in the area is 83,989, representing a change of 1.09 percent annually from 2010 to 2015. Currently, the population is 48.9 percent male and 51.1 percent female.			
<b>Population by Employment</b>			
Currently, 91.8 percent of the civilian labor force in the identified area is employed and 8.2 percent are unemployed. In comparison, 89.2 percent of the U.S. civilian labor force is employed, and 10.8 percent are unemployed. In five years the rate of employment in the area will be 92.5 percent of the civilian labor force, and unemployment will be 7.5 percent. The percentage of the U.S. civilian labor force that will be employed in five years is 91.2 percent, and 8.8 percent will be unemployed. In 2000, 68.8 percent of the population aged 16 years or older in the area participated in the labor force, and 0.1 percent were in the Armed Forces.			
In the current year, the occupational distribution of the employed population is:			
64.0 percent in white collar jobs (compared to 61.6 percent of the U.S. employment)			
21.4 percent in service jobs (compared to 17.3 percent of U.S. employment)			
14.7 percent in blue collar jobs (compared to 21.1 percent of U.S. employment)			
In 2000, 72.9 percent of the area population drove alone to work, and 5.5 percent worked at home. The average travel time to work in 2000 was 18.7 minutes in the area, compared to the U.S. average of 25.5 minutes.			
<b>Population by Education</b>			
In the current year, the educational attainment of the population aged 25 years or older in the area was distributed as follows:			
15.5 percent had not earned a high school diploma (14.8 percent in the U.S.)			
21.9 percent were high school graduates only (29.6 percent in the U.S.)			
7.3 percent had completed an Associate degree (7.7 percent in the U.S.)			
18.8 percent had a Bachelor's degree (17.7 percent in the U.S.)			
14.7 percent had earned a Master's/Professional/Doctorate Degree (10.4 percent in the U.S.)			
<b>Per Capita Income</b>			
1990 Per Capita Income	\$10,287	\$12,425	\$13,446
2000 Per Capita Income	\$13,556	\$18,342	\$20,572
2010 Per Capita Income	\$17,694	\$22,574	\$26,066
2015 Per Capita Income	\$19,600	\$24,442	\$28,477
1990-2000 Annual Rate	2.80%	3.97%	4.34%
2000-2010 Annual Rate	2.63%	2.05%	2.34%
2010-2015 Annual Rate	2.07%	1.60%	1.79%
<b>Households</b>			
1990 Households	2,191	10,427	20,045
2000 Households	3,113	15,619	27,102
2010 Total Households	3,452	18,235	31,090
2015 Total Households	3,595	19,366	32,730
1990-2000 Annual Rate	3.57%	4.12%	3.06%
2000-2010 Annual Rate	1.01%	1.52%	1.35%
2010-2015 Annual Rate	0.82%	1.21%	1.03%
2010 Average Household Size	2.95	2.73	2.52
The household count in this area has changed from 27,102 in 2000 to 31,090 in the current year, a change of 1.35 percent annually. The five-year projection of households is 32,730, a change of 1.03 percent annually from the current year total. Average household size is currently 2.52, compared to 2.48 in the year 2000. The number of families in the current year is 18,408 in the specified area.			

**COMMERCIAL  
PROPERTIES, INC**  
(505) 216-1500

**2019 GALISTEO ST. SUITE L-1 SANTA FE, NM 87505**

INFORMATION ENCLOSED IS DEEMED TO BE FROM RELIABLE SOURCES, HOWEVER, IT IS SUBJECT TO CHANGE, WITHDRAWAL FROM THE MARKET AND INDEPENDENT VERIFICATION BY PROSPECTIVE BUYER OR LESSEE, AS A PART OF THEIR DUE DILIGENCE IN DETERMINING THE FEASIBILITY AND ACCURACY OF INFORMATION OF THE PROPERTY FOR THEIR USE.

**WWW.CPI-NM.COM**

**JAMES WHEELER, CCIM**  
(505) 470-8081 (CELL)  
LICENSE # 18725



## Demographics 2 of 2

	1 mile	3 miles	5 miles
<b>Households by Income</b>			
Current median household income is \$51,397 in the area, compared to \$54,442 for all U.S. households. Median household income is projected to be \$55,418 in five years. In 2000, median household income was \$38,901, compared to \$28,905 in 1990.			
Current average household income is \$66,005 in this area, compared to \$70,173 for all U.S. households. Average household income is projected to be \$72,330 in five years. In 2000, average household income was \$51,116, compared to \$35,211 in 1990.			
Current per capita income is \$26,066 in the area, compared to the U.S. per capita income of \$26,739. The per capita income is projected to be \$28,477 in five years. In 2000, the per capita income was \$20,572, compared to \$13,446 in 1990.			
<b>Median Household Income</b>			
1990 Median Household Income	\$26,179	\$29,747	\$28,905
2000 Median Household Income	\$31,557	\$38,668	\$38,901
2010 Median Household Income	\$41,449	\$50,023	\$51,397
2015 Median Household Income	\$44,456	\$52,584	\$55,418
1990-2000 Annual Rate	1.89%	2.66%	3.02%
2000-2010 Annual Rate	2.70%	2.54%	2.76%
2010-2015 Annual Rate	1.41%	1.00%	1.52%
<b>Average Household Income</b>			
1990 Average Household Income	\$28,685	\$34,831	\$35,211
2000 Average Household Income	\$39,006	\$49,064	\$51,116
2010 Average Household Income	\$51,331	\$61,727	\$66,005
2015 Average Household Income	\$56,788	\$67,022	\$72,330
1990-2000 Annual Rate	3.12%	3.49%	3.80%
2000-2010 Annual Rate	2.72%	2.27%	2.53%
2010-2015 Annual Rate	2.04%	1.66%	1.85%
<b>2010 Housing</b>			
1990 Total Housing Units	2,294	10,982	21,055
2000 Total Housing Units	3,272	16,466	28,624
2010 Total Housing Units	3,705	19,656	33,672
2015 Total Housing Units	3,882	21,002	35,717
1990 Owner Occupied Housing Units	1,637	7,589	12,969
1990 Renter Occupied Housing Units	554	2,838	7,076
1990 Vacant Housing Units	138	564	1,076
2000 Owner Occupied Housing Units	1,815	10,706	16,992
2000 Renter Occupied Housing Units	1,298	4,912	10,110
2000 Vacant Housing Units	204	846	1,594
2010 Owner Occupied Housing Units	1,983	12,307	19,386
2010 Renter Occupied Housing Units	1,469	5,928	11,703
2010 Vacant Housing Units	253	1,421	2,582
2015 Owner Occupied Housing Units	2,079	13,033	20,444
2015 Renter Occupied Housing Units	1,516	6,332	12,286
2015 Vacant Housing Units	286	1,637	2,987
Currently, 57.6 percent of the 33,672 housing units in the area are owner occupied; 34.8 percent, renter occupied; and 7.7 are vacant. In 2000, there were 28,624 housing units - 59.2 percent owner occupied, 35.2. percent renter occupied, and 5.6 percent vacant. The rate of change in housing units since 2000 is 1.60 percent. Median home value in the area is \$241,217, compared to a median home value of \$157,913 for the U.S. In five years, median value is projected to change by 5.65 percent annually to \$317,555. From 2000 to the current year, median home value change by 4.76 percent annually.			

**COMMERCIAL  
PROPERTIES, INC**  
(505) 216-1500

**2019 GALISTEO ST. SUITE L-1 SANTA FE, NM 87505**  
INFORMATION ENCLOSED IS DEEMED TO BE FROM RELIABLE SOURCES, HOWEVER, IT IS SUBJECT TO CHANGE, WITHDRAWAL FROM THE MARKET AND INDEPENDENT VERIFICATION BY PROSPECTIVE BUYER OR LESSEE, AS A PART OF THEIR DUE DILIGENCE IN DETERMINING THE FEASIBILITY AND ACCURACY OF INFORMATION OF THE PROPERTY FOR THEIR USE.

**WWW.CPI-NM.COM**

**JAMES WHEELER, CCIM**  
(505) 470-8081 (CELL)  
LICENSE # 18725