

Furniture For Lobbies In Dormitory Service Units.

Series WD - 1, 2, and 3

1964

1964

1964

August 1, 1943

Doc.
HK
AZS
no: 48

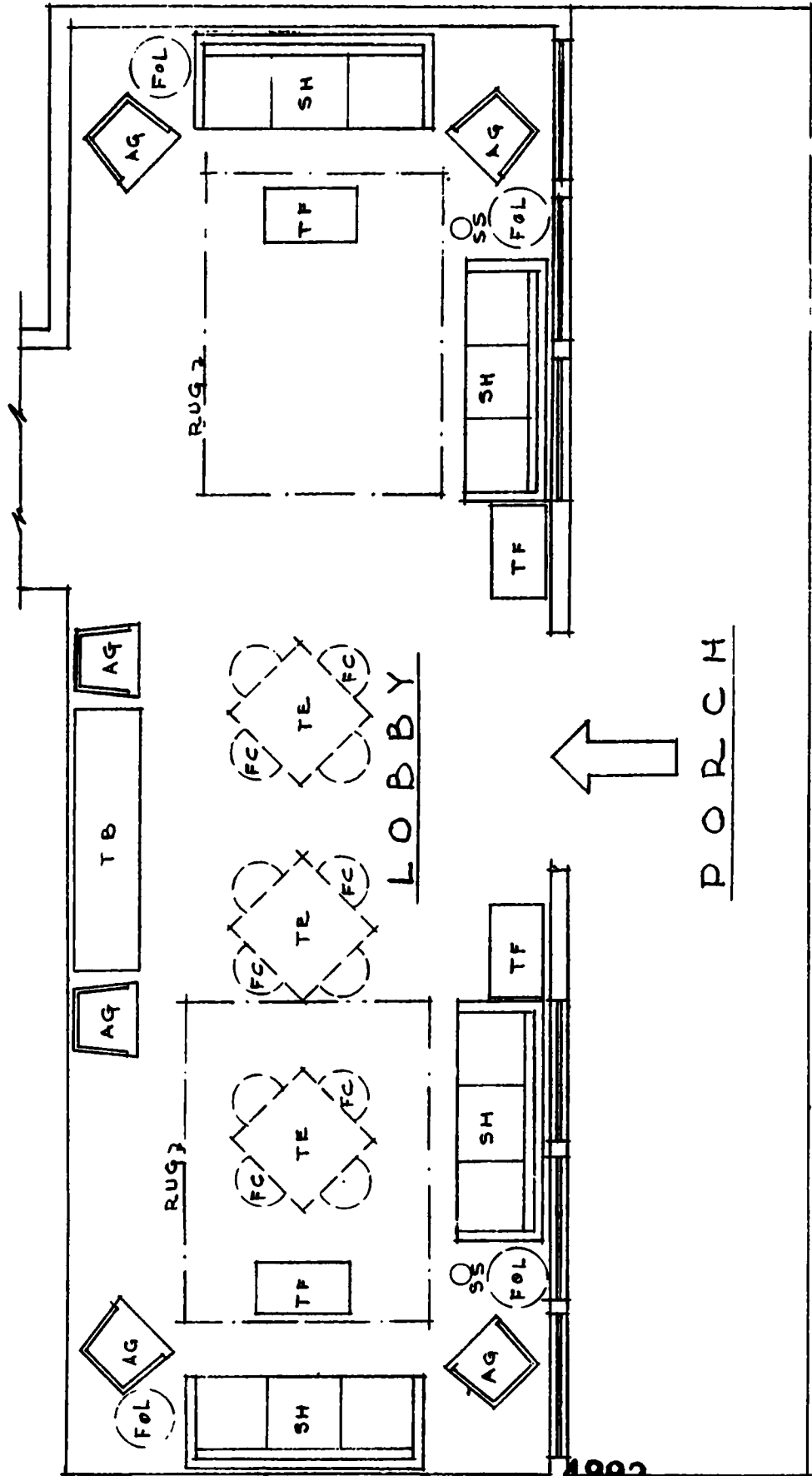
Furniture for Lobbies in Dormitory Service Units.
Series WD-1, 2 and 3

INTRODUCTION

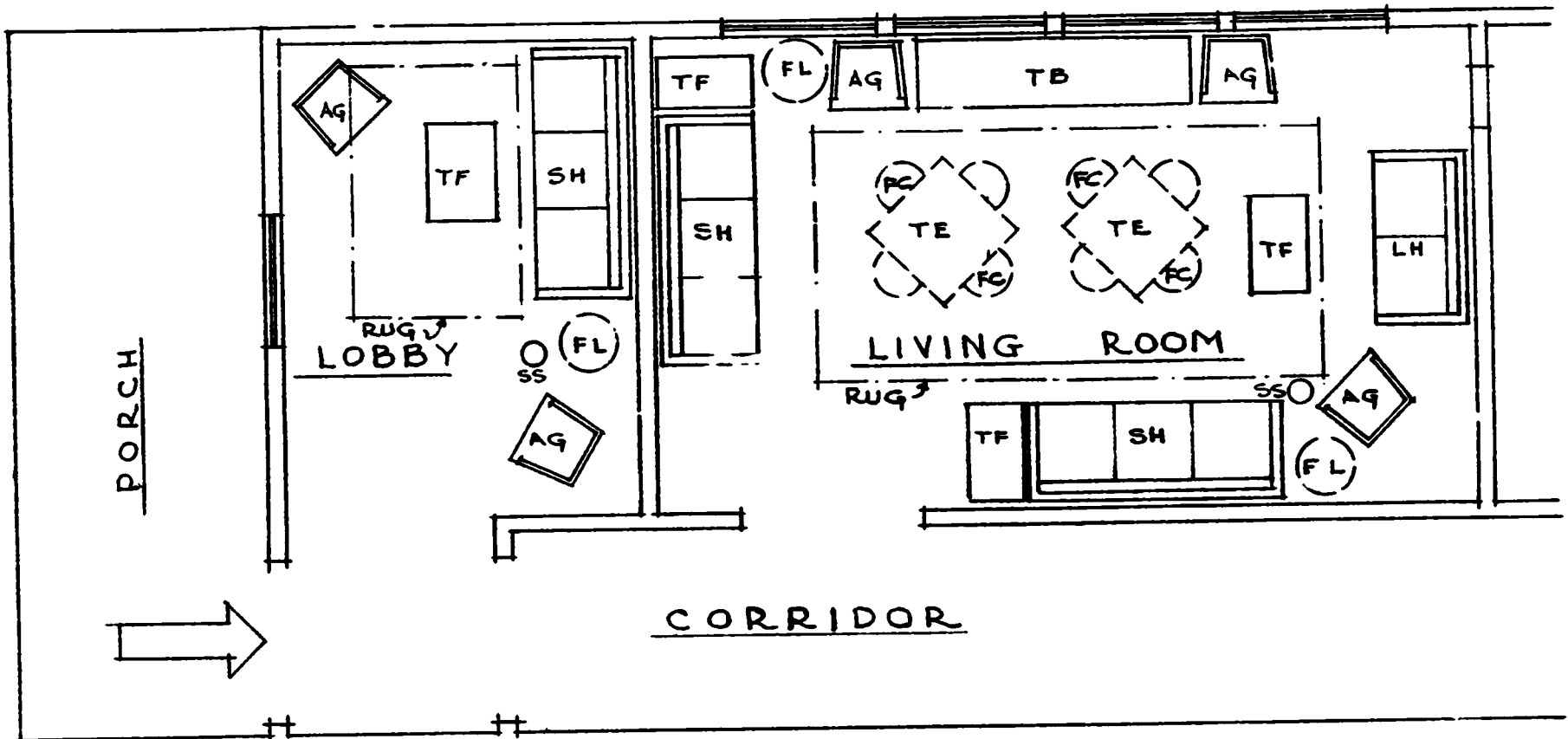
This bulletin sets forth the quantities of specific items of furniture required for lobbies in Dormitory Service Units. Specifications for furniture to be used in lobbies in Dormitory Service Units shall be as set forth in Bulletin No. 13, "Equipment Specifications for Tenant Activities Buildings and Cafeterias for Dormitory Projects". Illustrations of the furniture are contained in Bulletin No. 22, "Interior Furnishings for Project Service Facilities". All the requirements and designations set forth in Bulletins Nos. 13 and 22 shall apply to and be followed in the manufacture and furnishing of the items listed in the table below.

Item	WD-1 WD-2	WD-3
Chairs, Arm-AG	6	5
Chairs, Folding, -FC	12	3
Love Seats, -LH	0	1
Smoking Set-SS	2	2
Sofa-SH	4	3
Table, Card - TE	3	2
Table, Coffee-TF	4	4
Table-TB	1	1

Rugs and Floor Lamps (FL) indicated on the plans are not available through Central Procurement and are suggested for regional purchase.



TYPICAL FURNITURE LAYOUT
 FOR LOBBIES IN DORMITORY SERVICE UNITS
 SERIES WD-1 & 2



TYPICAL FURNITURE LAYOUT
 FOR LOBBIES IN DORMITORY SERVICE UNITS
 SERIES WD-3

