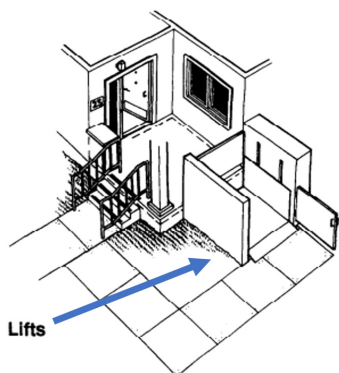


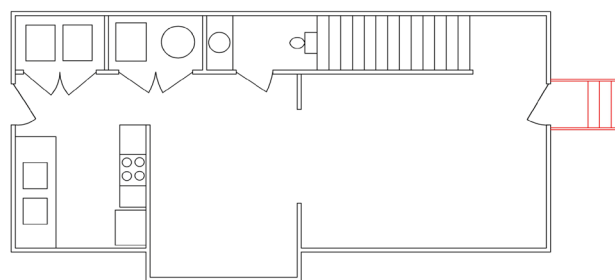
# ADAPTING THE HOME

ACCESSIBILITY RETROFITS FOR EXISTING HOMES

STAIR LIFT DEVICE



**Automatic Dedicated Stair Lift Device**



**Automatic Dual-Purpose Stair Lift Device**

## STEP 1

### Determine physical needs

Consult with the physician and occupational therapist (OT) to complete an activities of daily living (ADL) assessment. If the ADL assessment reveals a mobility limitation, an automatic stair lift device may be beneficial. The dual-purpose model can work as both a lift and traditional stairs. This option may work well for those who do not have enough space for a dedicated lift and a ramp.

### What are the mobility limitations?

- Have difficulty climbing stairs.
- Use a walker, cane, or assistive device.
- Are not physically able to climb stairs.
- Use a wheelchair.

## STEP 2

### Professionals can help evaluate the home

Consult with the OT to complete a home safety assessment. The OT can help identify areas of the home that are difficult to access. If the stairway presents a challenge, consider adding a stair lift device.

## STEP 2 (continued)

### Professionals can help modify the home

The OT will work with the homeowner and the builder or remodeler to complete the home modification. The video at this link shows how an OT can help:

<https://www.youtube.com/watch?v=MyEzDB5S3eE&t=1s>  
(source: AOTA and AARP).

## STEP 3

### Select the right device

Consult the OT to select the appropriate stair lift device. A dedicated or dual-purpose stair lift device will vary based on the complexity of the device; generally, a high-end stair lift will cost the same as a dual-purpose lift.

### Consider the installation and maintenance costs

Typical stair lift device total costs—

- Device and installation: \$4,000–\$30,000 (costs based on lift height of the device).
- For a lift height of 4–6 ft., \$4,000–\$18,000 is typical.

Typical device annual maintenance costs—

- 1- to 5-year inspection: \$100–\$250.
- Repair of motor or electronics: cost varies.